

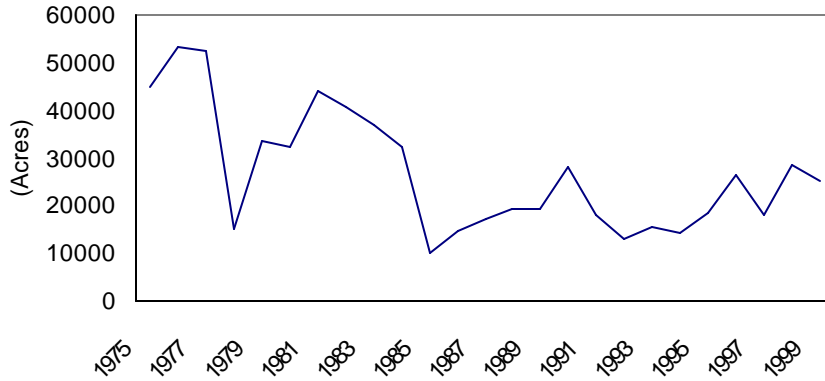
# Butler

Wheat

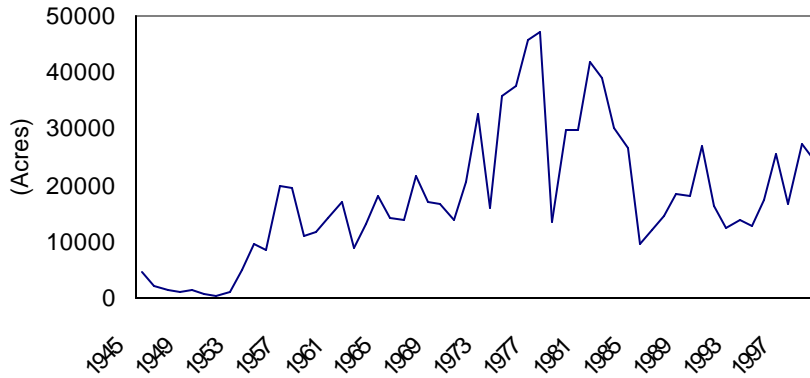
Source: Missouri Department of Agriculture and USDA

Figures created by: Joe Parcell, Agriculture Economics, University of Missouri [573-882-6533]

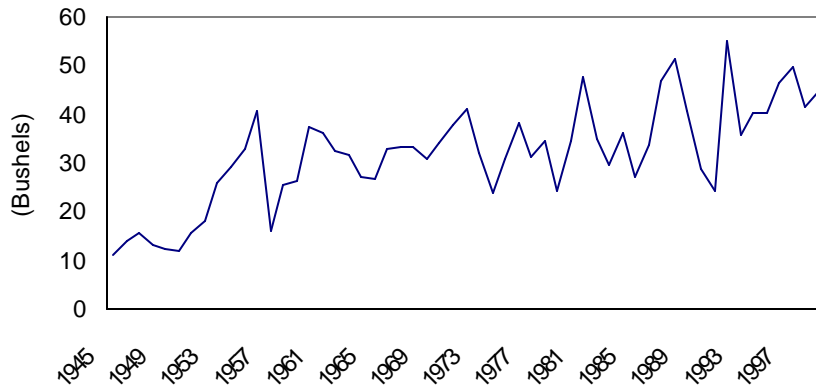
### Planted Acres



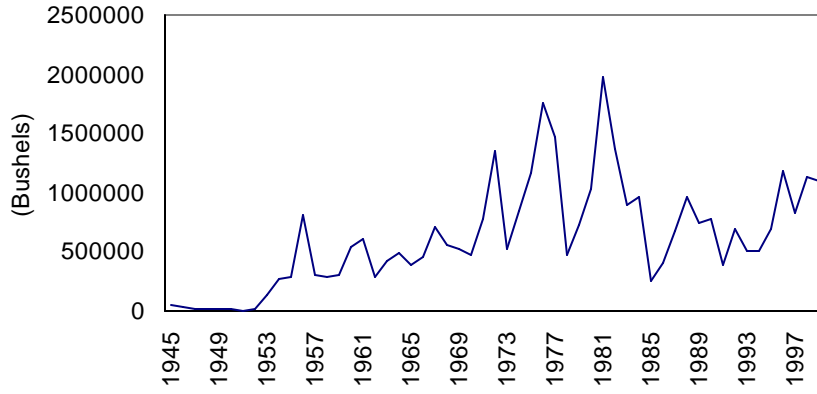
### Harvested Acres



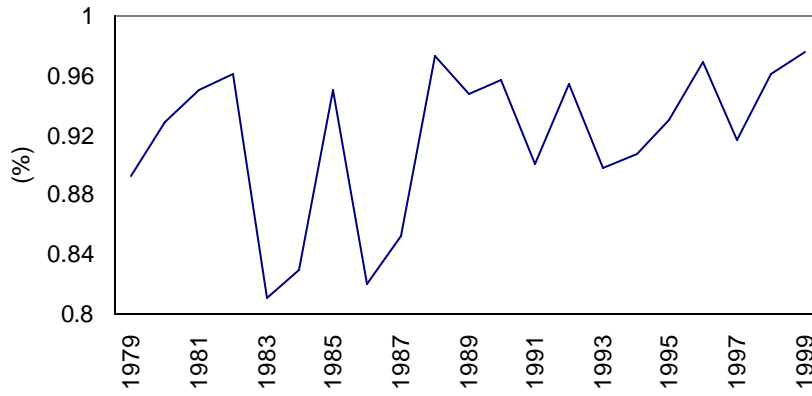
### Yield



**Production**



**Ratio of Harvested to Planted Acres**



**Yield Risk  
(5-year moving standard deviation)**

