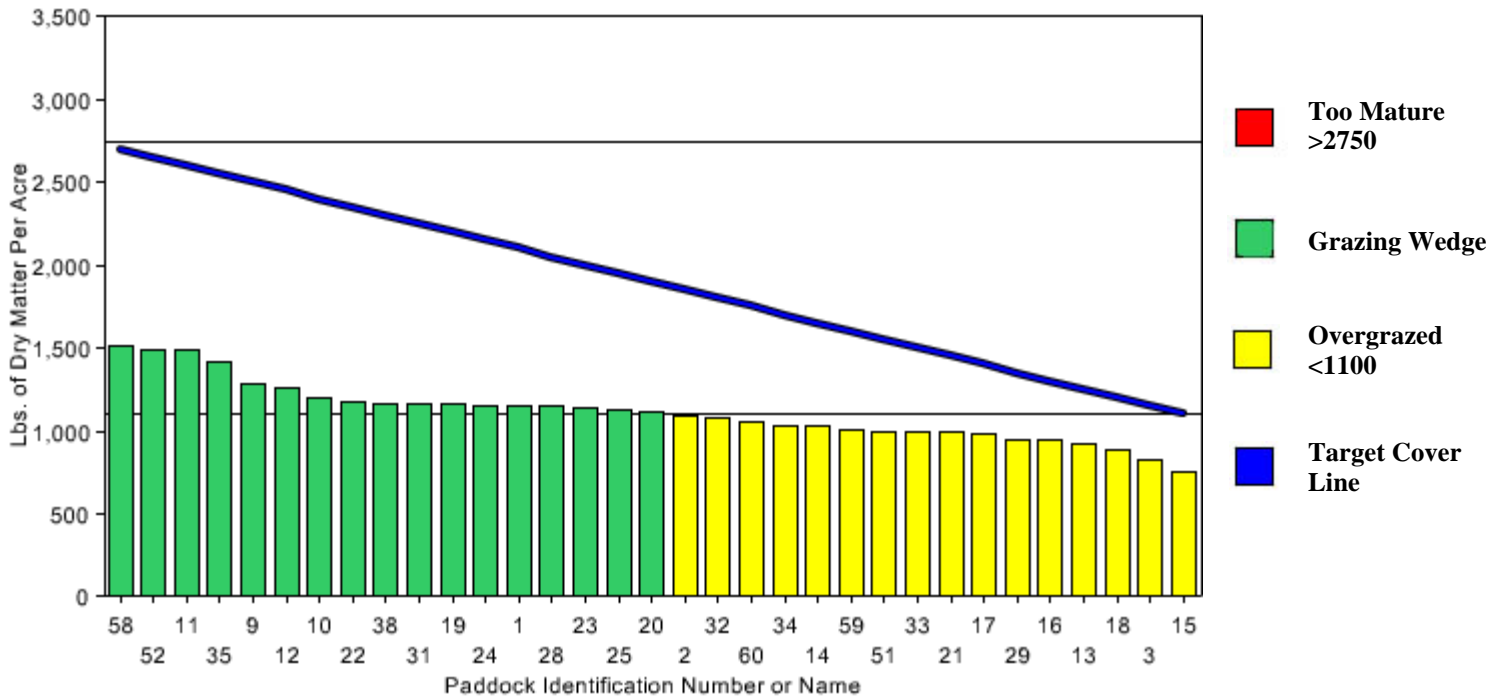
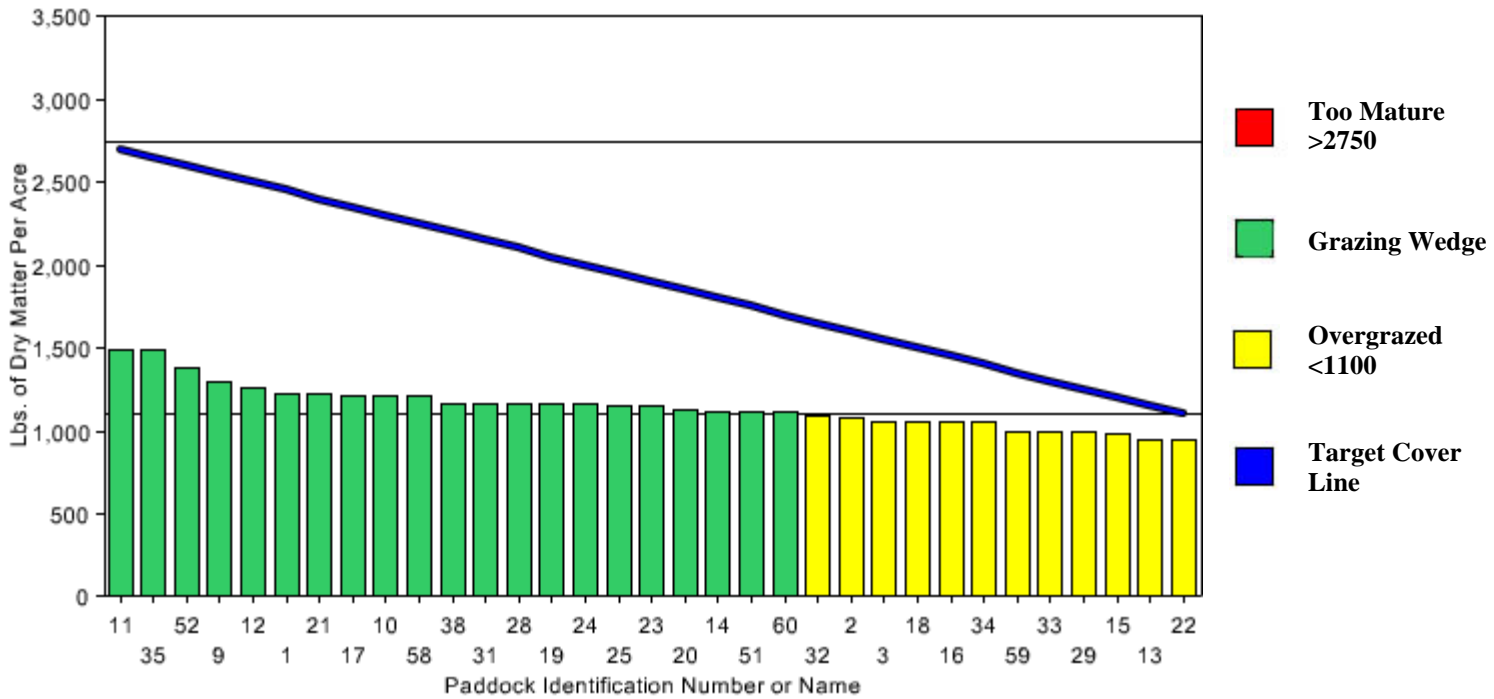


**Grazing Wedge
KBC Farms Purdy
01/08/2007**



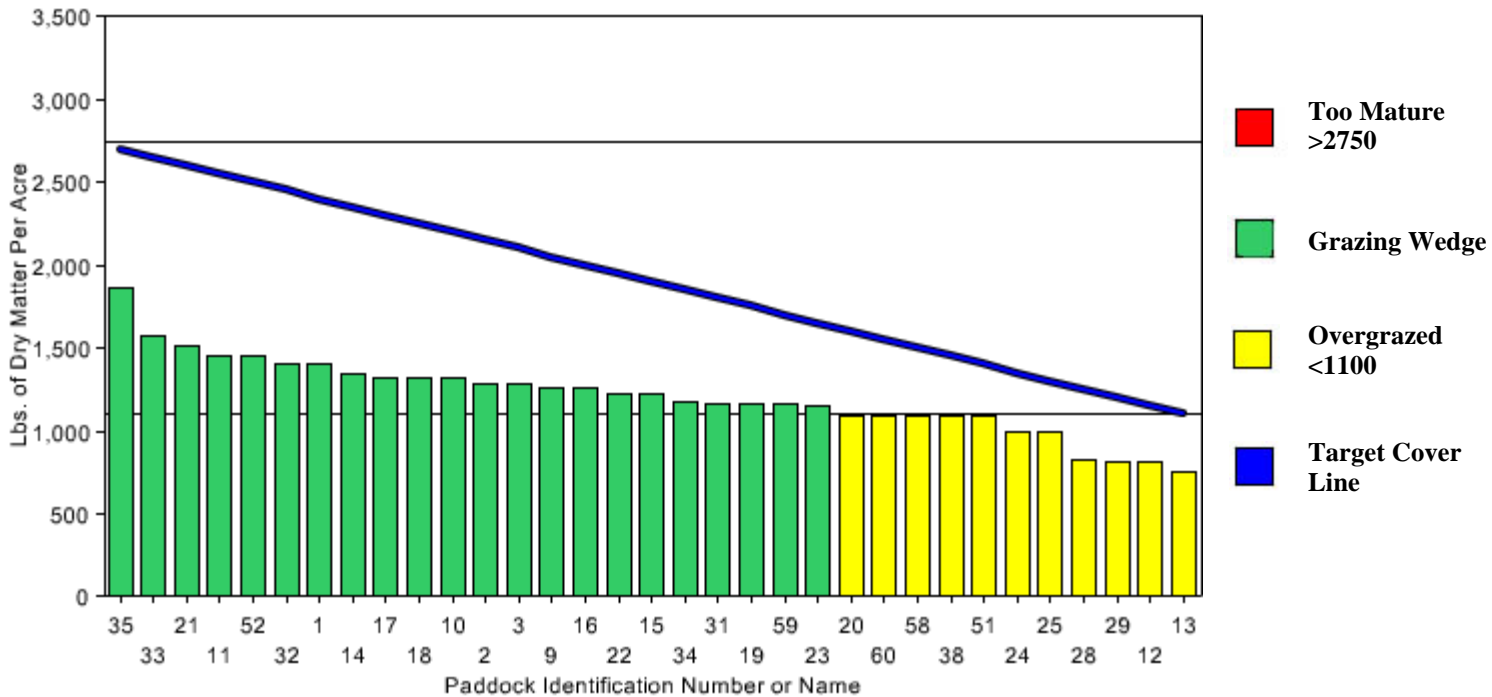
Summary of KEY INDICATORS for Grazing Management and Animal Performance		
Estimated Growth Rate (lbs of dry matter accumulation per acre per day)		-
Cover when cows turned onto a paddock (lbs DM/Acre)	Actual: 1520	Ideal: 2750
Cover when cows removed from paddock (lbs DM/Acre)	Actual: 750	Ideal: 1100
Average Pasture Cover (lbs DM/Acre)	Actual: 1114	Ideal: 1925
Rotation length current (days till cows return to given paddock)	80	
Milk production (lbs per day)	40	
Lbs of hay for milking herd currently being fed (per cow per day)	34	
Lbs of grain for milking herd currently being fed (per cow per day)	16	
Lbs of hay for dry cows currently being fed (per cow per day)	0	
Lbs of grain for dry cows currently being fed (per cow per day)	5	
Critical issues right now		
<p>Avoid pugging the permanent pastures. Feed cows only in paddocks that need regressed or in the sacrifice paddocks when there is danger of pugging. Dry cows are strip grazing stockpiled fescue, watch their body condition for any loss of weight. No rain since 1/1/07 34# hay/forage divided as follows- 19# millet balage, 10# corn silage, 5# whole cotton seed</p>		

**Grazing Wedge
KBC Farms Purdy
02/27/2007**



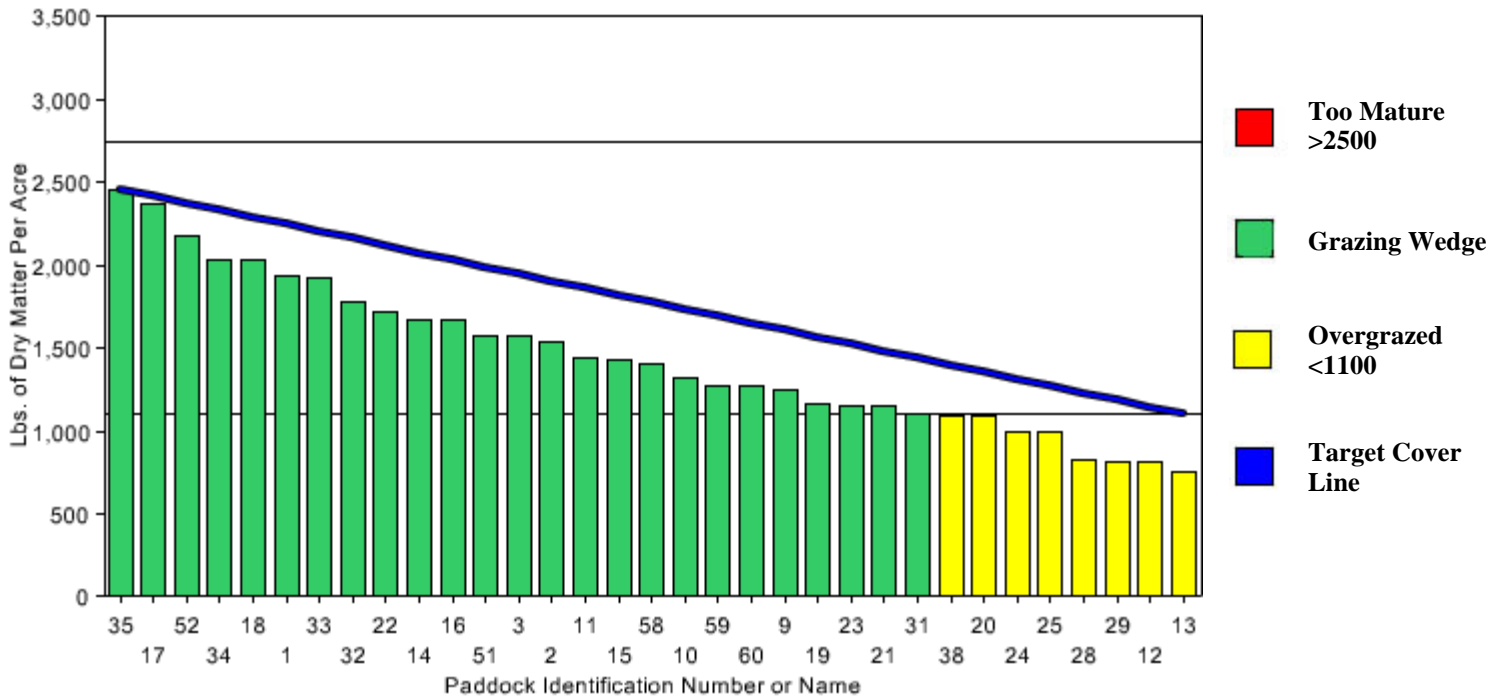
Summary of KEY INDICATORS for Grazing Management and Animal Performance		
Estimated Growth Rate (lbs of dry matter accumulation per acre per day)		-
Cover when cows turned onto a paddock (lbs DM/Acre)	Actual: 1490	Ideal: 2750
Cover when cows removed from paddock (lbs DM/Acre)	Actual: 950	Ideal: 1100
Average Pasture Cover (lbs DM/Acre)	Actual: 1149	Ideal: 1925
Rotation length current (days till cows return to given paddock)	100	
Milk production (lbs per day)	41	
Lbs of hay for milking herd currently being fed (per cow per day)	29	
Lbs of grain for milking herd currently being fed (per cow per day)	16	
Lbs of hay for dry cows currently being fed (per cow per day)	0	
Lbs of grain for dry cows currently being fed (per cow per day)	5	
Critical issues right now		
Cows are not currently grazing. Put 50# N on 70 acres CSA 2/28/07. There is adequate ground moisture but the soil temp is too cold for much growth. All paddocks showing no cover are being regrassed. Dry cows are still grazing stockpiled fescue		

**Grazing Wedge
KBC Farms Purdy
03/06/2007**



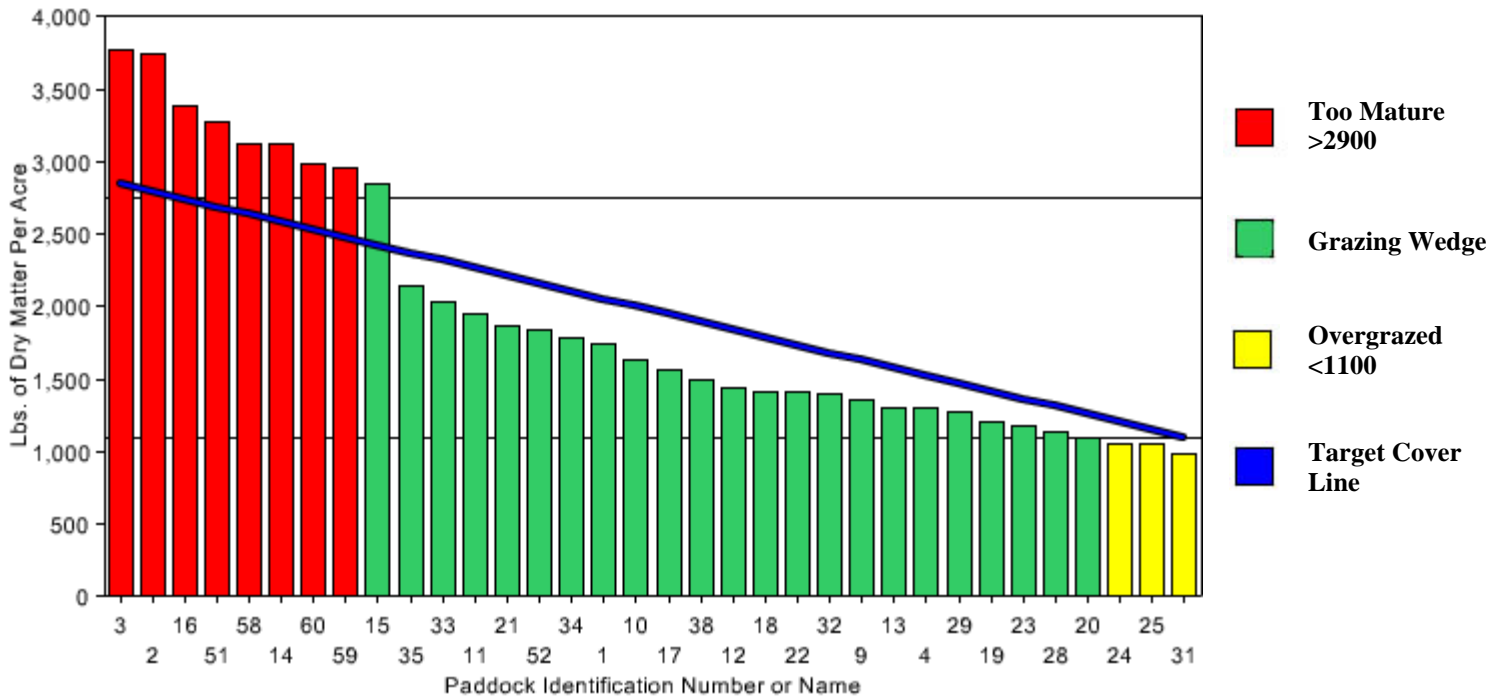
Summary of KEY INDICATORS for Grazing Management and Animal Performance		
Estimated Growth Rate (lbs of dry matter accumulation per acre per day)		33
Cover when cows turned onto a paddock (lbs DM/Acre)	Actual: 1860	Ideal: 2750
Cover when cows removed from paddock (lbs DM/Acre)	Actual: 750	Ideal: 1100
Average Pasture Cover (lbs DM/Acre)	Actual: 1213	Ideal: 1925
Rotation length current (days till cows return to given paddock)		
Milk production (lbs per day)		43
Lbs of hay for milking herd currently being fed (per cow per day)		30
Lbs of grain for milking herd currently being fed (per cow per day)		16
Lbs of hay for dry cows currently being fed (per cow per day)		0
Lbs of grain for dry cows currently being fed (per cow per day)		5
Critical issues right now		
Soil temp 40 degrees at 4 in. Put 50# N on 30 acres of winter rye 3/8/07. Expecting an accelerated growth rate this week with the warmer weather and will begin grazing.		

**Grazing Wedge
KBC Farms Purdy
03/13/2007**



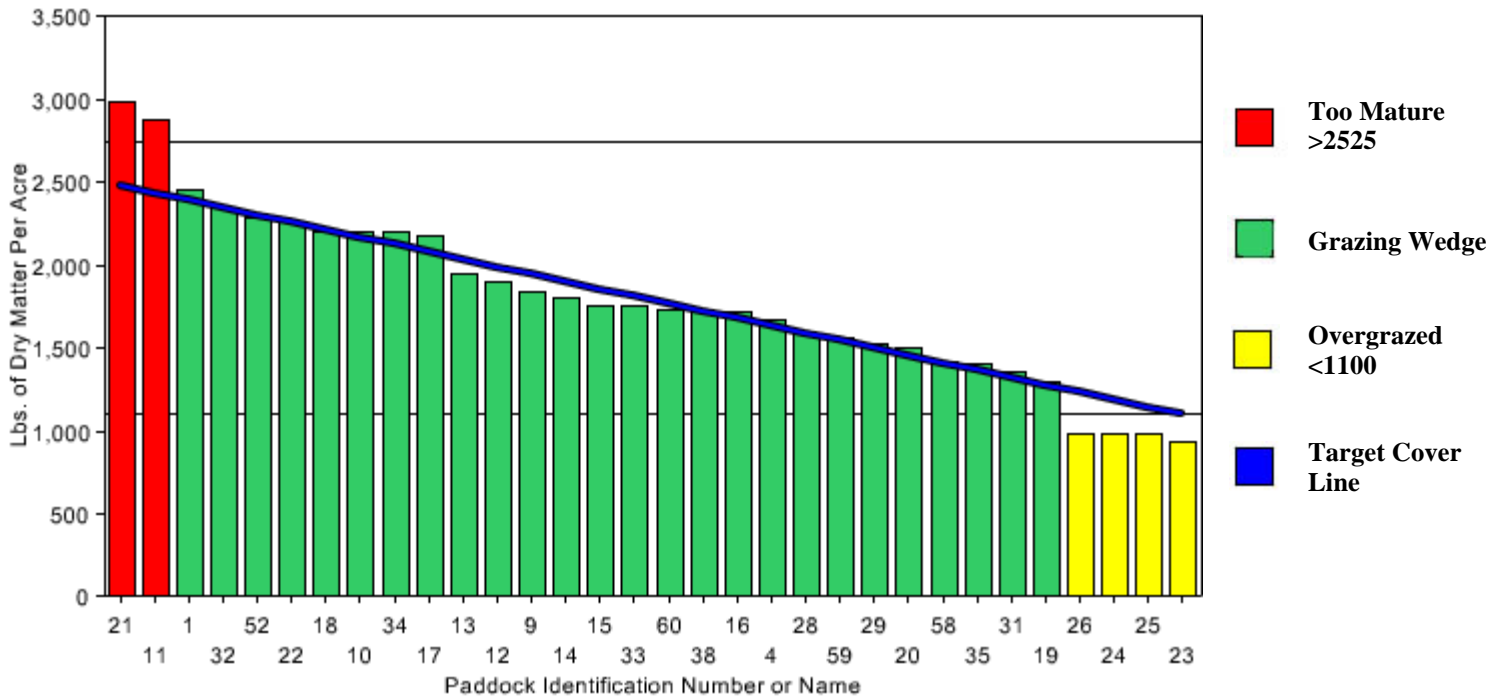
Summary of KEY INDICATORS for Grazing Management and Animal Performance		
Estimated Growth Rate (lbs of dry matter accumulation per acre per day)		65
Cover when cows turned onto a paddock (lbs DM/Acre)	Actual: 2450	Ideal: 2500
Cover when cows removed from paddock (lbs DM/Acre)	Actual: 750	Ideal: 1100
Average Pasture Cover (lbs DM/Acre)	Actual: 1448	Ideal: 1800
Rotation length current (days till cows return to given paddock)		19
Milk production (lbs per day)		48
Lbs of hay for milking herd currently being fed (per cow per day)		0
Lbs of grain for milking herd currently being fed (per cow per day)		12
Lbs of hay for dry cows currently being fed (per cow per day)		0
Lbs of grain for dry cows currently being fed (per cow per day)		5
Critical issues right now		

**Grazing Wedge
KBC Farms Purdy
03/22/2007**



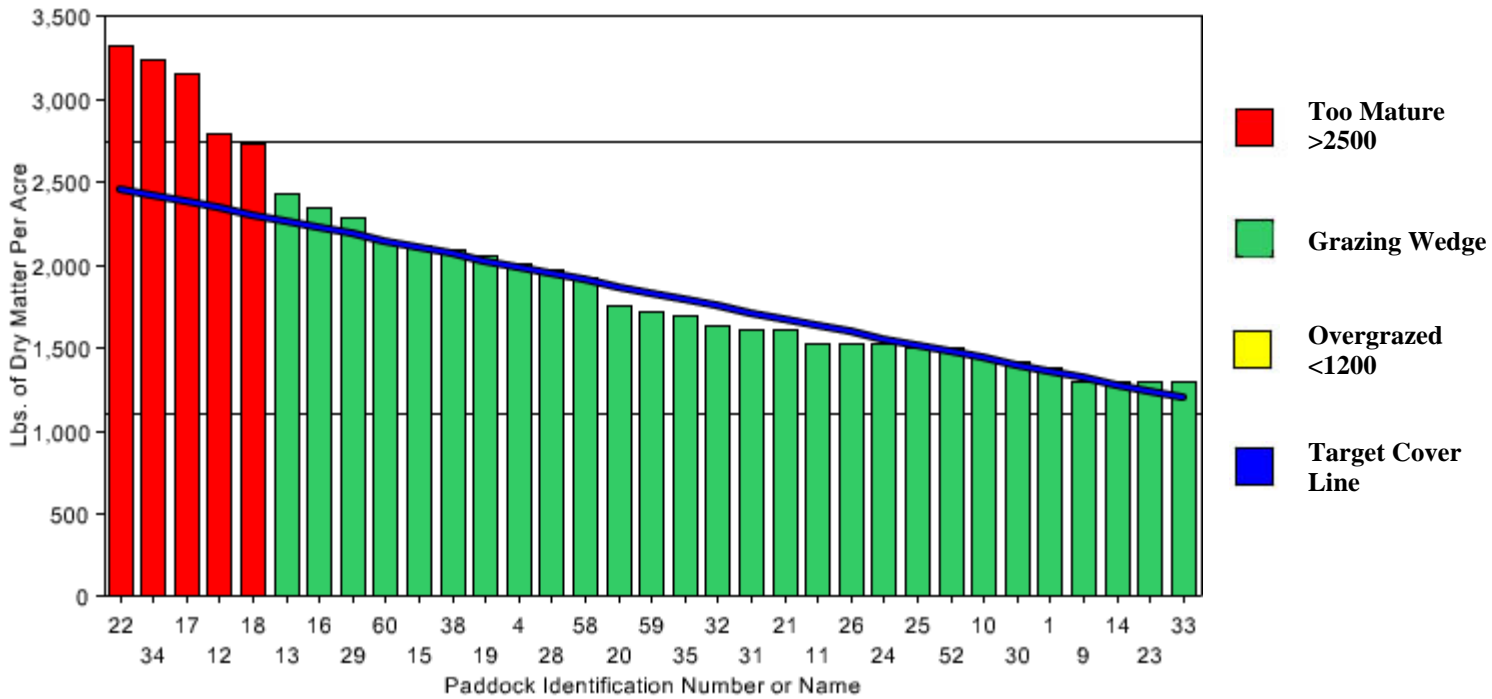
Summary of KEY INDICATORS for Grazing Management and Animal Performance		
Estimated Growth Rate (lbs of dry matter accumulation per acre per day)		93
Cover when cows turned onto a paddock (lbs DM/Acre)	Actual: 3775	Ideal: 2900
Cover when cows removed from paddock (lbs DM/Acre)	Actual: 990	Ideal: 1100
Average Pasture Cover (lbs DM/Acre)	Actual: 1938	Ideal: 2000
Rotation length current (days till cows return to given paddock)		17
Milk production (lbs per day)		50
Lbs of hay for milking herd currently being fed (per cow per day)		0
Lbs of grain for milking herd currently being fed (per cow per day)		11
Lbs of hay for dry cows currently being fed (per cow per day)		0
Lbs of grain for dry cows currently being fed (per cow per day)		0
Critical issues right now		
<p>229 cows in milk, 33 springers, 48 dry cows, 310 total cows on the milking platform. At this growth rate the cows need 95 acres to meet their feed demand and there are 135 acres actively growing. Need to set aside 40 acres for balage? $300/95=3.15*35*17+1100=2974$ pre-grazing cover. $3.15*35=110$ feed demand. Rain 3.5 in. 3/20/07</p>		

**Grazing Wedge
KBC Farms Purdy
03/29/2007**



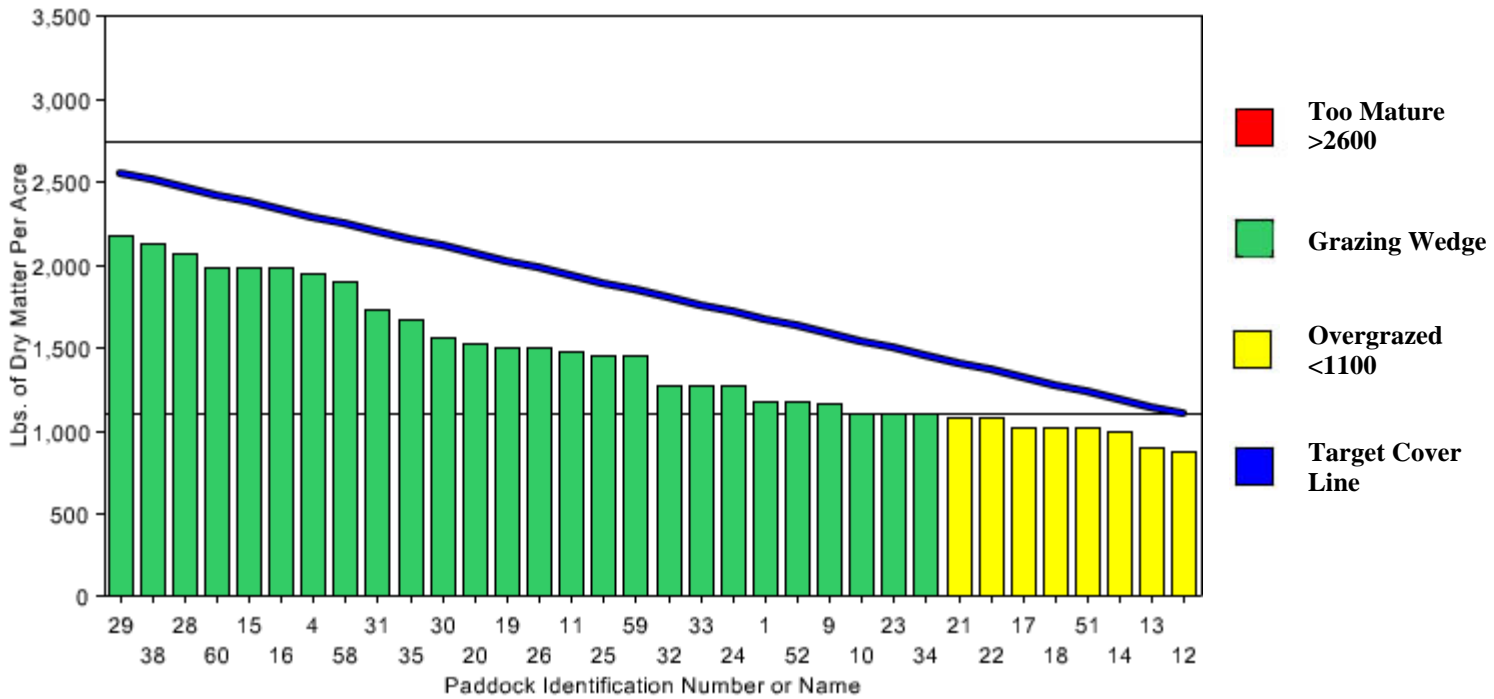
Summary of KEY INDICATORS for Grazing Management and Animal Performance		
Estimated Growth Rate (lbs of dry matter accumulation per acre per day)		80
Cover when cows turned onto a paddock (lbs DM/Acre)	Actual: 2990	Ideal: 2525
Cover when cows removed from paddock (lbs DM/Acre)	Actual: 940	Ideal: 1100
Average Pasture Cover (lbs DM/Acre)	Actual: 1792	Ideal: 1812.5
Rotation length current (days till cows return to given paddock)		19
Milk production (lbs per day)		50
Lbs of hay for milking herd currently being fed (per cow per day)		0
Lbs of grain for milking herd currently being fed (per cow per day)		10
Lbs of hay for dry cows currently being fed (per cow per day)		0
Lbs of grain for dry cows currently being fed (per cow per day)		5
Critical issues right now		
Pre-grazing cover $300/140=2.14*35*19+1100=2525$, Feed demand $2.14*35=75$, Soil temp 60 degrees, Rain .80 inch last week		

**Grazing Wedge
KBC Farms Purdy
04/04/2007**



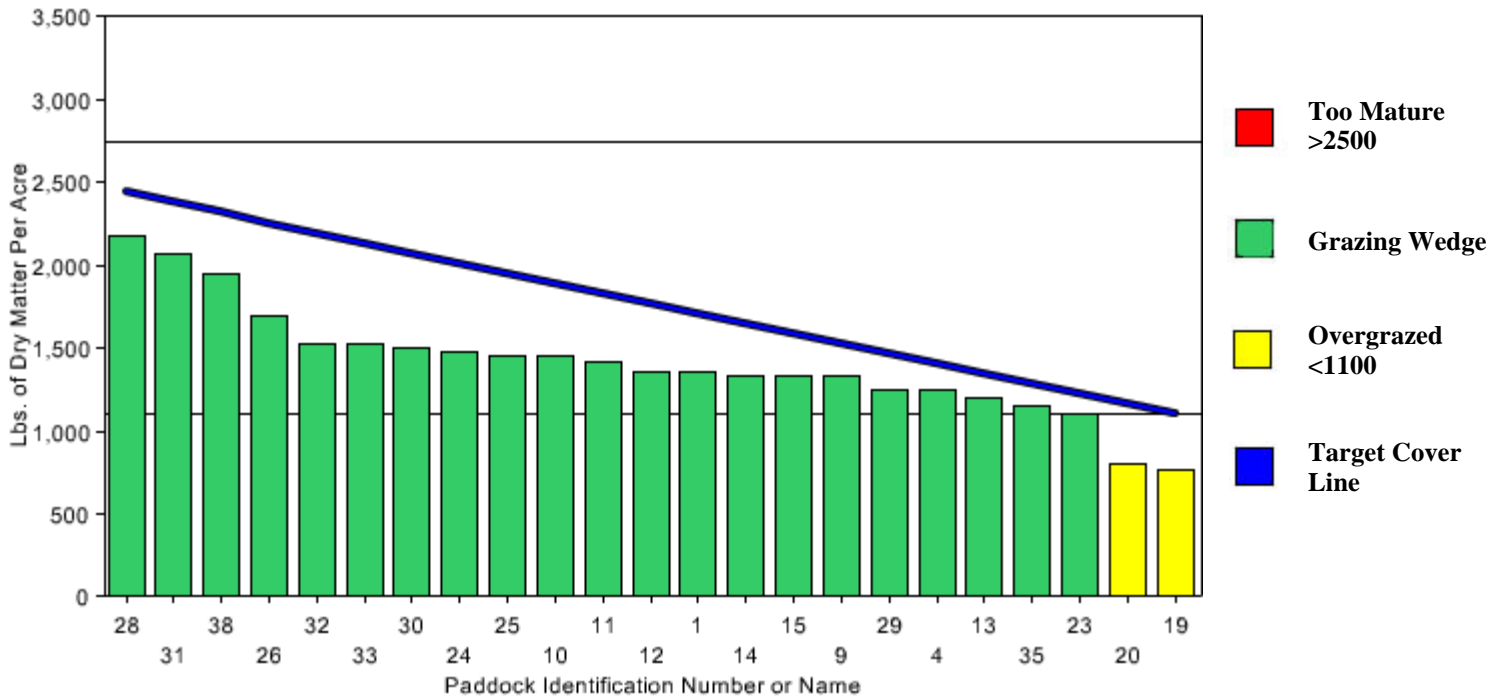
Summary of KEY INDICATORS for Grazing Management and Animal Performance		
Estimated Growth Rate (lbs of dry matter accumulation per acre per day)		90
Cover when cows turned onto a paddock (lbs DM/Acre)	Actual: 3325	Ideal: 2500
Cover when cows removed from paddock (lbs DM/Acre)	Actual: 1300	Ideal: 1200
Average Pasture Cover (lbs DM/Acre)	Actual: 1930	Ideal: 1850
Rotation length current (days till cows return to given paddock)		20
Milk production (lbs per day)		50
Lbs of hay for milking herd currently being fed (per cow per day)		0
Lbs of grain for milking herd currently being fed (per cow per day)		10
Lbs of hay for dry cows currently being fed (per cow per day)		0
Lbs of grain for dry cows currently being fed (per cow per day)		0
Critical issues right now		
<p>Soil temp 58 degrees, this will drop with the colder temps, thus slowing growth rates. Growth rate is exceeding demand for now, but winter rye paddocks are slowing growth and maturing rapidly. Will have fewer paddocks next week, but when warmer weather returns the cool season perennials will resume adequate growth to carry the stocking rate...we hope!!! $305/165 * 35 * 20 + 1200 = 2500$</p>		

**Grazing Wedge
KBC Farms Purdy
04/10/2007**



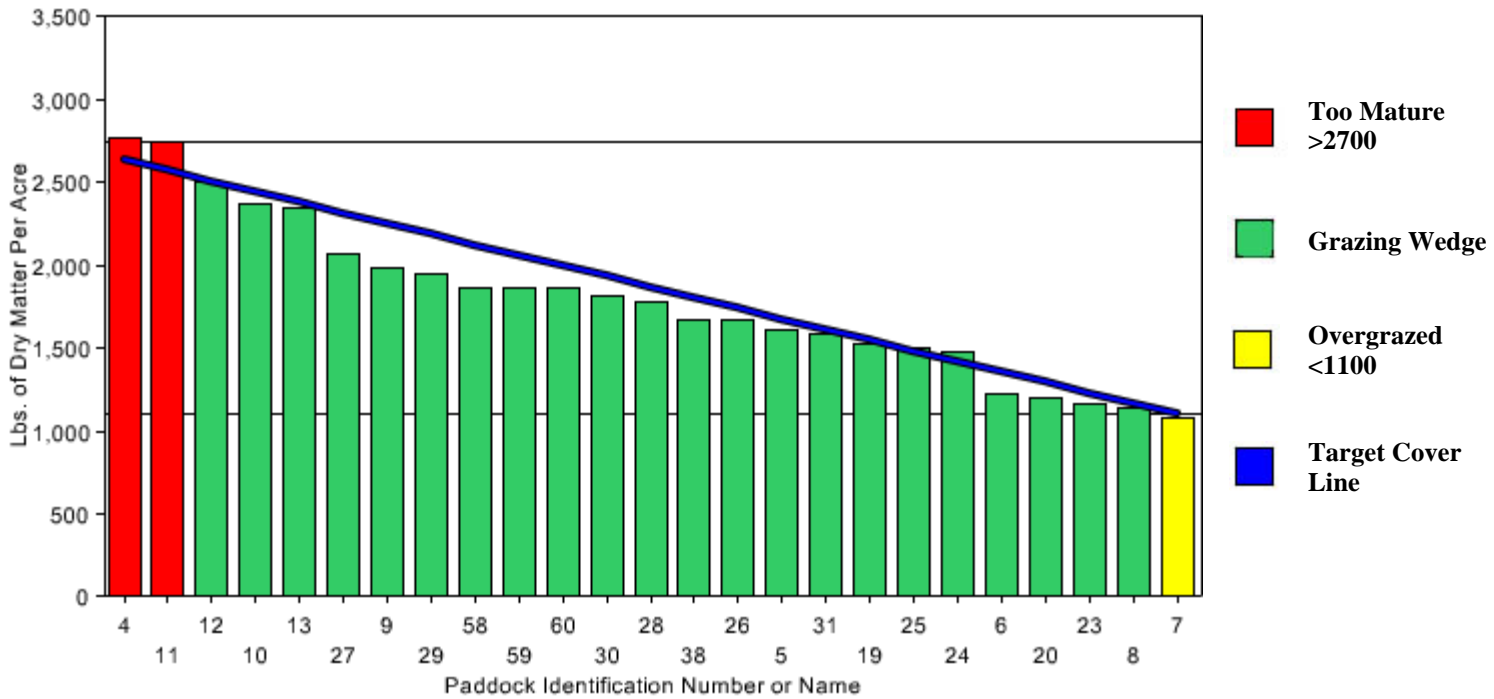
Summary of KEY INDICATORS for Grazing Management and Animal Performance		
Estimated Growth Rate (lbs of dry matter accumulation per acre per day)		16
Cover when cows turned onto a paddock (lbs DM/Acre)	Actual: 2180	Ideal: 2600
Cover when cows removed from paddock (lbs DM/Acre)	Actual: 870	Ideal: 1100
Average Pasture Cover (lbs DM/Acre)	Actual: 1433	Ideal: 1850
Rotation length current (days till cows return to given paddock)		25
Milk production (lbs per day)		49
Lbs of hay for milking herd currently being fed (per cow per day)		0
Lbs of grain for milking herd currently being fed (per cow per day)		12
Lbs of hay for dry cows currently being fed (per cow per day)		0
Lbs of grain for dry cows currently being fed (per cow per day)		0
Critical issues right now		

**Grazing Wedge
KBC Farms Purdy
04/17/2007**



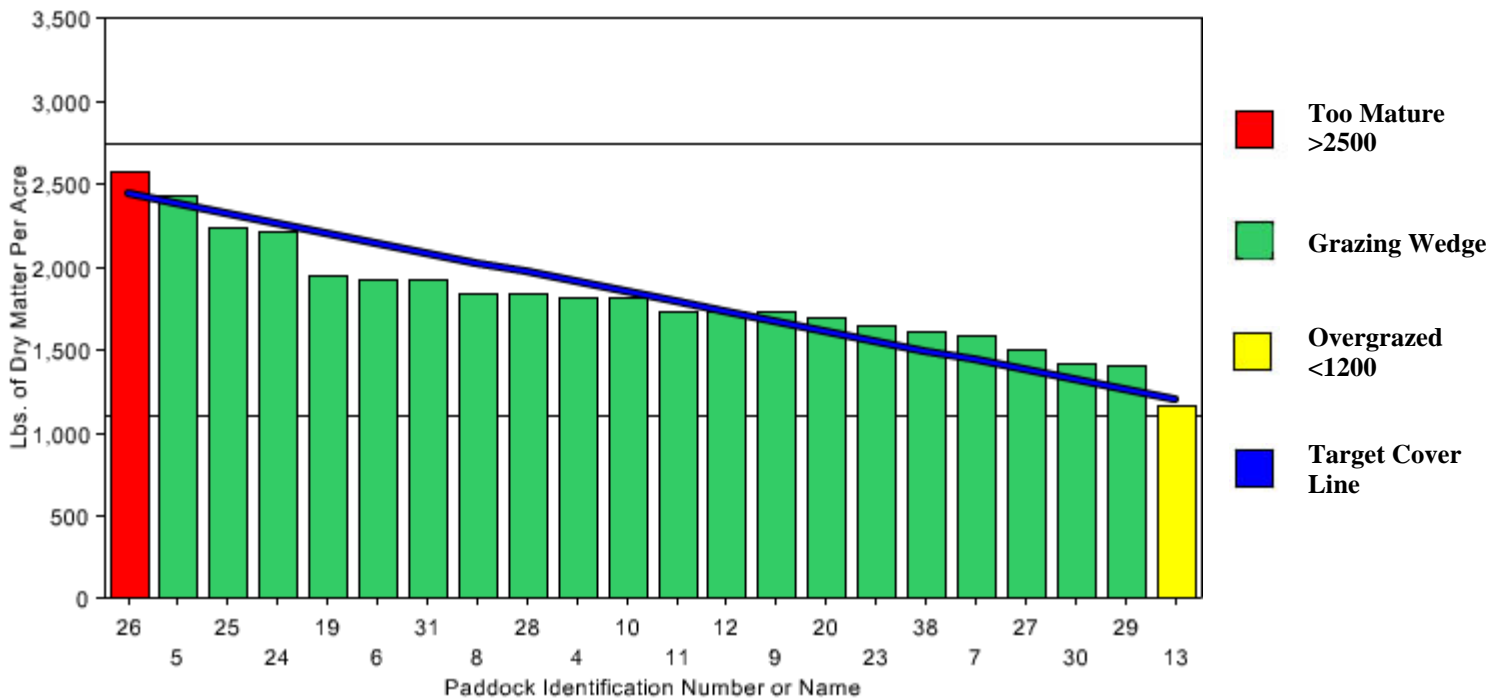
Summary of KEY INDICATORS for Grazing Management and Animal Performance		
Estimated Growth Rate (lbs of dry matter accumulation per acre per day)		38
Cover when cows turned onto a paddock (lbs DM/Acre)	Actual: 2180	Ideal: 2500
Cover when cows removed from paddock (lbs DM/Acre)	Actual: 770	Ideal: 1100
Average Pasture Cover (lbs DM/Acre)	Actual: 1414	Ideal: 1800
Rotation length current (days till cows return to given paddock)		25
Milk production (lbs per day)		50
Lbs of hay for milking herd currently being fed (per cow per day)		8
Lbs of grain for milking herd currently being fed (per cow per day)		12
Lbs of hay for dry cows currently being fed (per cow per day)		0
Lbs of grain for dry cows currently being fed (per cow per day)		4
Critical issues right now		

**Grazing Wedge
KBC Farms Purdy
05/01/2007**



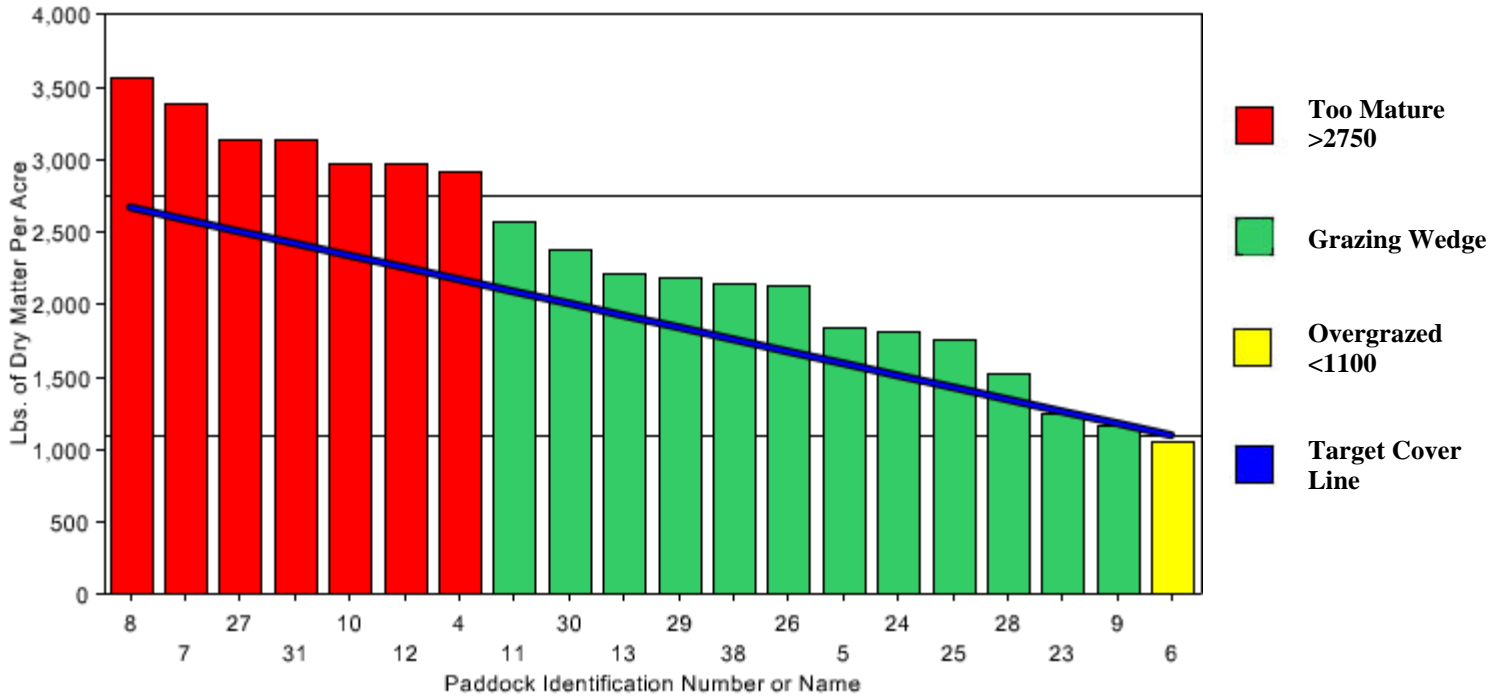
Summary of KEY INDICATORS for Grazing Management and Animal Performance		
Estimated Growth Rate (lbs of dry matter accumulation per acre per day)		54
Cover when cows turned onto a paddock (lbs DM/Acre)	Actual: 2770	Ideal: 2700
Cover when cows removed from paddock (lbs DM/Acre)	Actual: 1080	Ideal: 1100
Average Pasture Cover (lbs DM/Acre)	Actual: 1792	Ideal: 1900
Rotation length current (days till cows return to given paddock)		25
Milk production (lbs per day)		46
Lbs of hay for milking herd currently being fed (per cow per day)		0
Lbs of grain for milking herd currently being fed (per cow per day)		11
Lbs of hay for dry cows currently being fed (per cow per day)		0
Lbs of grain for dry cows currently being fed (per cow per day)		3
Critical issues right now		

**Grazing Wedge
KBC Farms Purdy
05/08/2007**



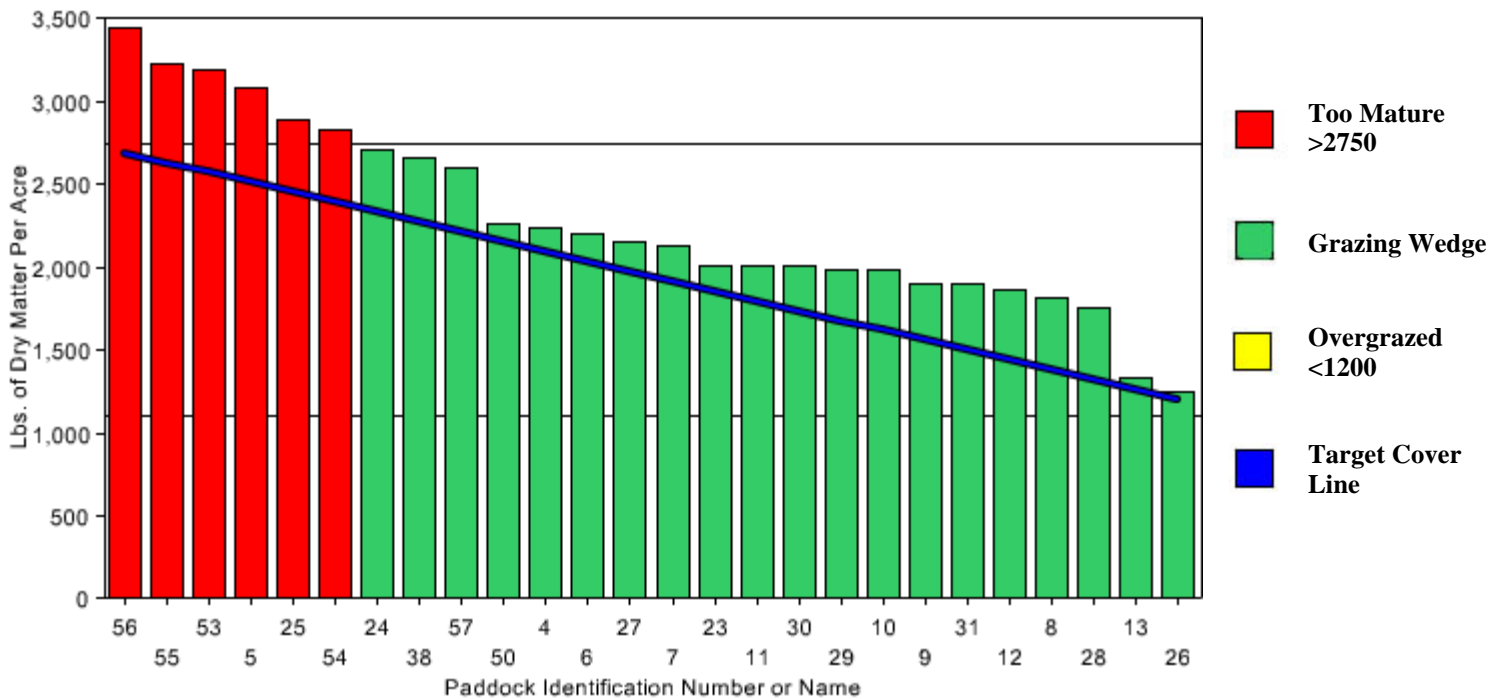
Summary of KEY INDICATORS for Grazing Management and Animal Performance		
Estimated Growth Rate (lbs of dry matter accumulation per acre per day)		82
Cover when cows turned onto a paddock (lbs DM/Acre)	Actual: 2575	Ideal: 2500
Cover when cows removed from paddock (lbs DM/Acre)	Actual: 1165	Ideal: 1200
Average Pasture Cover (lbs DM/Acre)	Actual: 1809	Ideal: 1850
Rotation length current (days till cows return to given paddock)		21
Milk production (lbs per day)		50
Lbs of hay for milking herd currently being fed (per cow per day)		0
Lbs of grain for milking herd currently being fed (per cow per day)		11
Lbs of hay for dry cows currently being fed (per cow per day)		0
Lbs of grain for dry cows currently being fed (per cow per day)		3
Critical issues right now		

**Grazing Wedge
KBC Farms Purdy
05/18/2007**



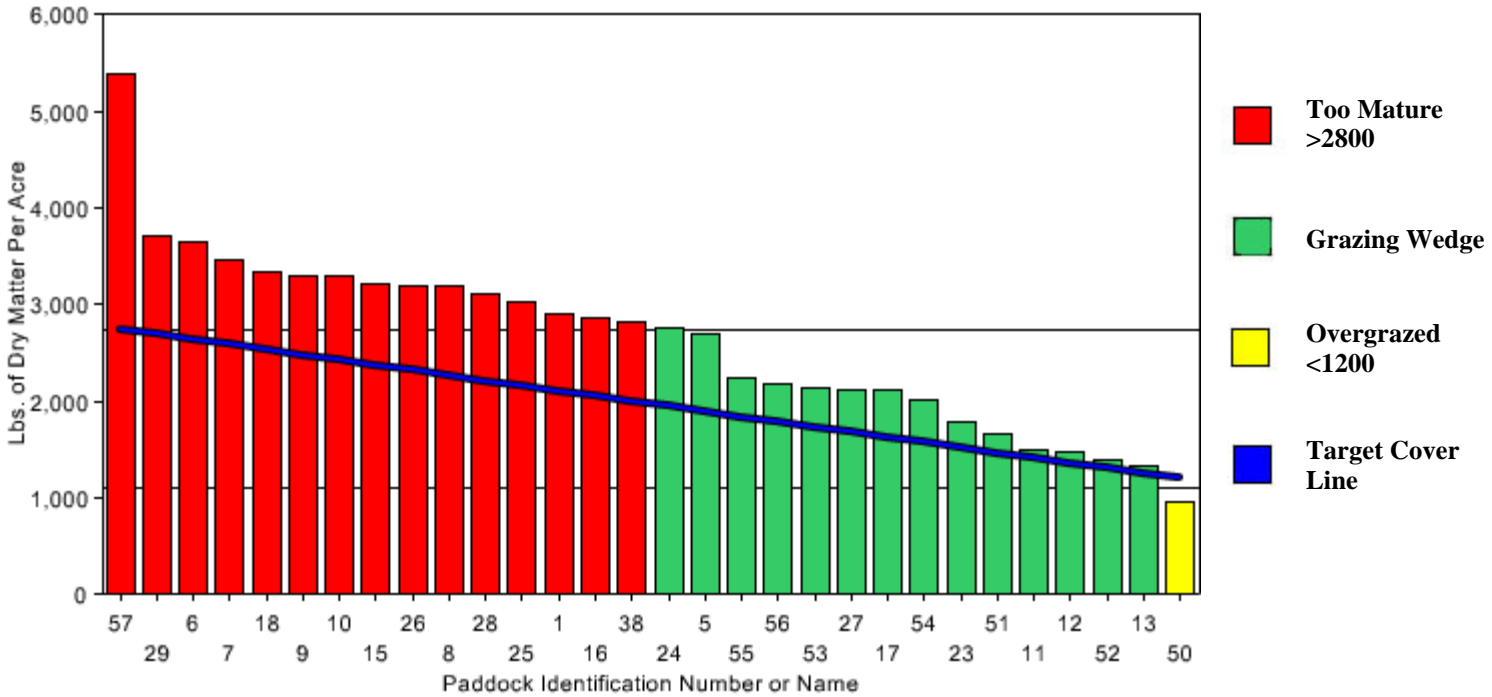
Summary of KEY INDICATORS for Grazing Management and Animal Performance		
Estimated Growth Rate (lbs of dry matter accumulation per acre per day)		117
Cover when cows turned onto a paddock (lbs DM/Acre)	Actual: 3560	Ideal: 2750
Cover when cows removed from paddock (lbs DM/Acre)	Actual: 1050	Ideal: 1100
Average Pasture Cover (lbs DM/Acre)	Actual: 2306	Ideal: 1925
Rotation length current (days till cows return to given paddock)		20
Milk production (lbs per day)		48
Lbs of hay for milking herd currently being fed (per cow per day)		0
Lbs of grain for milking herd currently being fed (per cow per day)		10
Lbs of hay for dry cows currently being fed (per cow per day)		0
Lbs of grain for dry cows currently being fed (per cow per day)		0
Critical issues right now		

**Grazing Wedge
KBC Farms Purdy
05/29/2007**



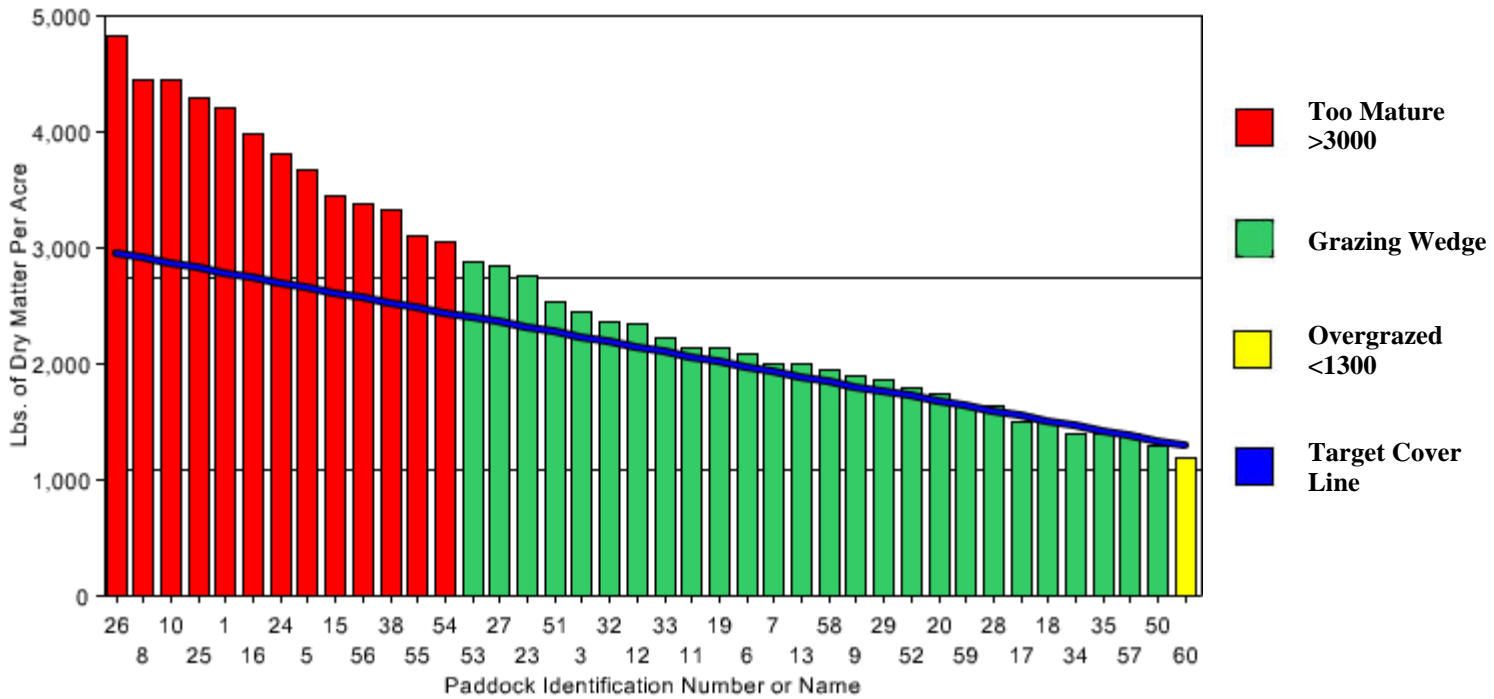
Summary of KEY INDICATORS for Grazing Management and Animal Performance		
Estimated Growth Rate (lbs of dry matter accumulation per acre per day)		76
Cover when cows turned onto a paddock (lbs DM/Acre)	Actual: 3450	Ideal: 2750
Cover when cows removed from paddock (lbs DM/Acre)	Actual: 1250	Ideal: 1200
Average Pasture Cover (lbs DM/Acre)	Actual: 2286	Ideal: 1975
Rotation length current (days till cows return to given paddock)		21
Milk production (lbs per day)		49
Lbs of hay for milking herd currently being fed (per cow per day)		0
Lbs of grain for milking herd currently being fed (per cow per day)		10
Lbs of hay for dry cows currently being fed (per cow per day)		0
Lbs of grain for dry cows currently being fed (per cow per day)		0
Critical issues right now		
7 clicks*141+178=1165		

**Grazing Wedge
KBC Farms Purdy
06/13/2007**



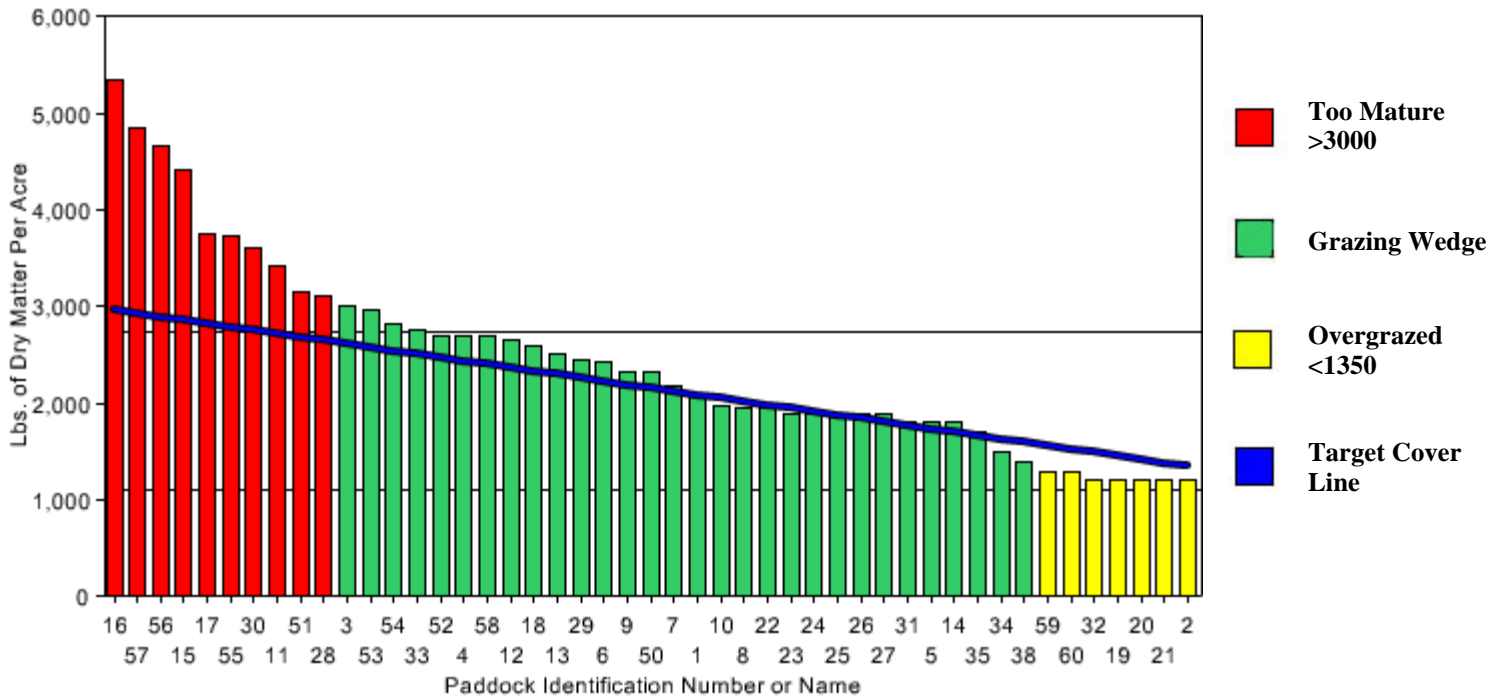
Summary of KEY INDICATORS for Grazing Management and Animal Performance		
Estimated Growth Rate (lbs of dry matter accumulation per acre per day)		84
Cover when cows turned onto a paddock (lbs DM/Acre)	Actual: 5395	Ideal: 2800
Cover when cows removed from paddock (lbs DM/Acre)	Actual: 970	Ideal: 1200
Average Pasture Cover (lbs DM/Acre)	Actual: 2631	Ideal: 2000
Rotation length current (days till cows return to given paddock)		21
Milk production (lbs per day)		48
Lbs of hay for milking herd currently being fed (per cow per day)		0
Lbs of grain for milking herd currently being fed (per cow per day)		9
Lbs of hay for dry cows currently being fed (per cow per day)		0
Lbs of grain for dry cows currently being fed (per cow per day)		0
Critical issues right now		

**Grazing Wedge
KBC Farms Purdy
06/20/2007**



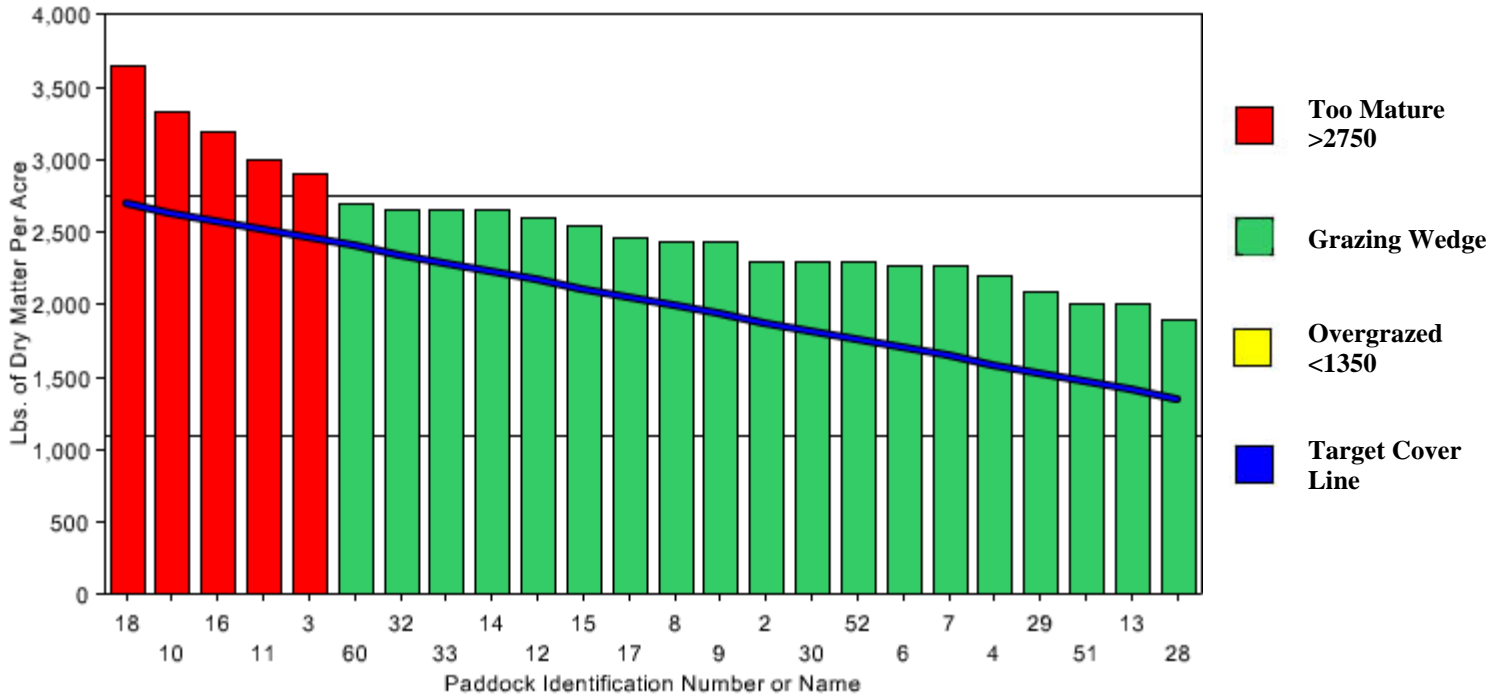
Summary of KEY INDICATORS for Grazing Management and Animal Performance		
Estimated Growth Rate (lbs of dry matter accumulation per acre per day)		129
Cover when cows turned onto a paddock (lbs DM/Acre)	Actual: 4830	Ideal: 3000
Cover when cows removed from paddock (lbs DM/Acre)	Actual: 1200	Ideal: 1300
Average Pasture Cover (lbs DM/Acre)	Actual: 2581	Ideal: 2150
Rotation length current (days till cows return to given paddock)		21
Milk production (lbs per day)		49
Lbs of hay for milking herd currently being fed (per cow per day)		0
Lbs of grain for milking herd currently being fed (per cow per day)		9
Lbs of hay for dry cows currently being fed (per cow per day)		0
Lbs of grain for dry cows currently being fed (per cow per day)		0
Critical issues right now		
Maybe it's time to make a little balage.		

**Grazing Wedge
KBC Farms Purdy
07/25/2007**



Summary of KEY INDICATORS for Grazing Management and Animal Performance		
Estimated Growth Rate (lbs of dry matter accumulation per acre per day)		-
Cover when cows turned onto a paddock (lbs DM/Acre)	Actual: 5340	Ideal: 3000
Cover when cows removed from paddock (lbs DM/Acre)	Actual: 1200	Ideal: 1350
Average Pasture Cover (lbs DM/Acre)	Actual: 2453	Ideal: 2175
Rotation length current (days till cows return to given paddock)	?	
Milk production (lbs per day)	45	
Lbs of hay for milking herd currently being fed (per cow per day)	0	
Lbs of grain for milking herd currently being fed (per cow per day)	12	
Lbs of hay for dry cows currently being fed (per cow per day)	0	
Lbs of grain for dry cows currently being fed (per cow per day)	0	
Critical issues right now		

**Grazing Wedge
KBC Farms Purdy
08/28/2007**



Summary of KEY INDICATORS for Grazing Management and Animal Performance		
Estimated Growth Rate (lbs of dry matter accumulation per acre per day)		-
Cover when cows turned onto a paddock (lbs DM/Acre)	Actual: 3645	Ideal: 2750
Cover when cows removed from paddock (lbs DM/Acre)	Actual: 1900	Ideal: 1350
Average Pasture Cover (lbs DM/Acre)	Actual: 2535	Ideal: 2050
Rotation length current (days till cows return to given paddock)		
Milk production (lbs per day)		40
Lbs of hay for milking herd currently being fed (per cow per day)		5
Lbs of grain for milking herd currently being fed (per cow per day)		14
Lbs of hay for dry cows currently being fed (per cow per day)		0
Lbs of grain for dry cows currently being fed (per cow per day)		0
Critical issues right now		

Season Summary Report for KBC Farms Purdy

Season	Plate Meter Measurement Dates															
Category	01/08/07	02/27/07	03/06/07	03/13/07	03/22/07	03/29/07	04/04/07	04/10/07	04/17/07	05/01/07	05/08/07	05/18/07	05/29/07	06/13/07	06/20/07	07/25/07
Estimated Growth Rate (lbs DM/Acre per day)	-	-	33	65	93	80	90	16	38	54	82	117	76	84	129	-
Average Pasture Cover (lbs DM/Acre)	1114	1149	1213	1448	1938	1792	1930	1433	1414	1792	1809	2306	2286	2631	2581	2453
Rotation Length (days till cows return to given paddock)	80	100	-	19	17	19	20	25	25	25	21	20	21	21	21	?
Pre Grazing Cover (lbs DM/Acre)	1520	1490	1860	2450	3775	2990	3325	2180	2180	2770	2575	3560	3450	5395	4830	5340
Post Grazing Cover (lbs DM/Acre)	750	950	750	750	990	940	1300	870	770	1080	1165	1050	1250	970	1200	1200
Milk Production (lbs per day)	40	41	43	48	50	50	50	49	50	46	50	48	49	48	49	45
Lbs of Hay for Milking Herd (per cow per day)	34	29	30	0	0	0	0	0	8	0	0	0	0	0	0	0
Lbs of Grain for Milking Herd (per cow per day)	16	16	16	12	11	10	10	12	12	11	11	10	10	9	9	12
Lbs of Hay for dry cows (per cow per day)	0	0	0	0	0	0	0	0	0	0	0	0	0	0	0	0
Lbs of Grain for dry cows (per cow per day)	5	5	5	5	0	5	0	0	4	3	3	0	0	0	0	0